

Chart Spots

Anchored VWAP

NinjaTrader 8

Manual



Where is **longer time value**? Is the **market trading below or above the longer time value**? These are important questions to ask, that can guide your trading decisions.

The **Anchored VWAP indicator enables you to track VWAP during longer timeframes** than the typical session based VWAP.

Configure a start date and time for the indicator to setup:

- Yearly VWAP
- Monthly VWAP
- Weekly VWAP
- ...

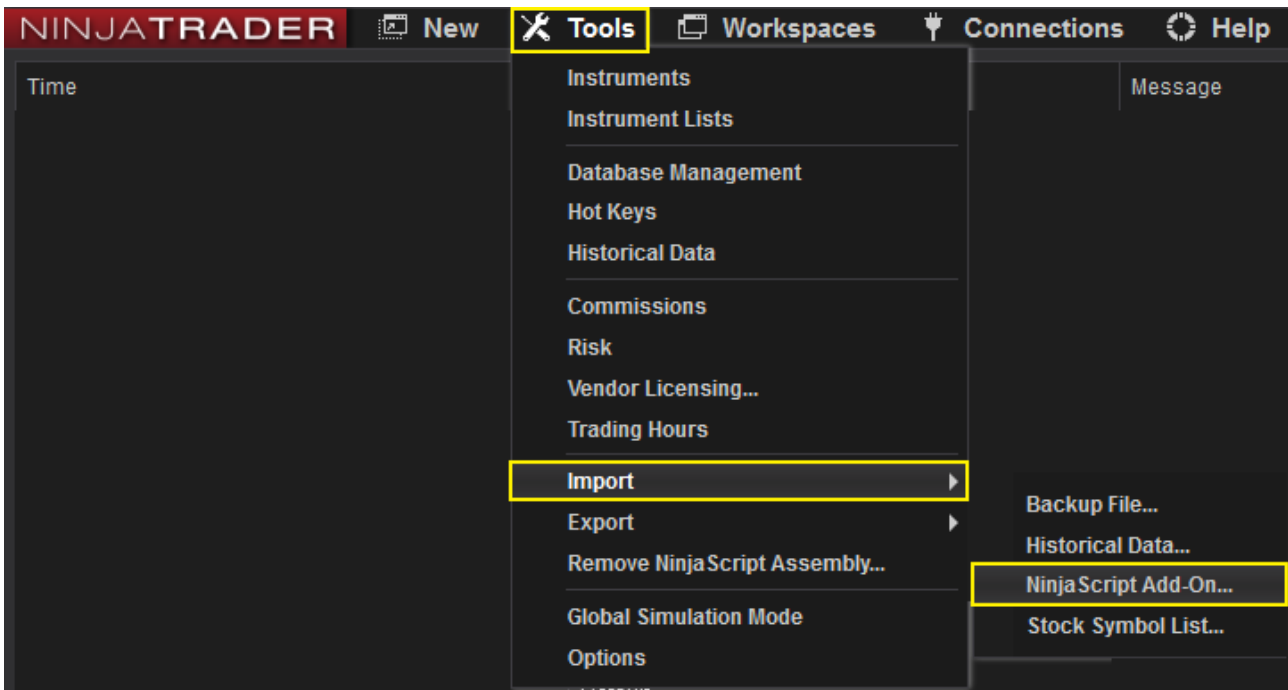
Table of Contents

- 1. Installation..... 4
- 2. Configuration..... 5
 - 2.1 Add Indicator to Chart..... 5
 - 2.2 Configure Anchor Date Time..... 6

1. Installation

After downloading the .ZIP file from the Chart Spots website, Open NinjaTrader 8 and follow these steps:

1. Select the NinjaTrader 8 Control Center window
2. Tools > Import > NinjaScript Add-on...
3. Select the downloaded .ZIP file

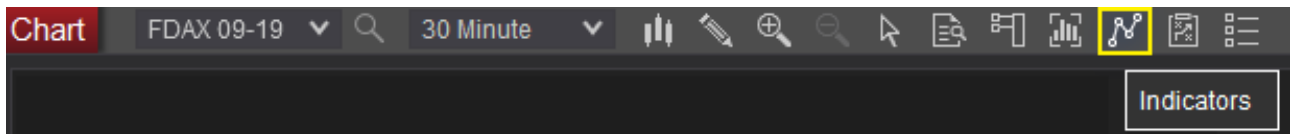


2. Configuration

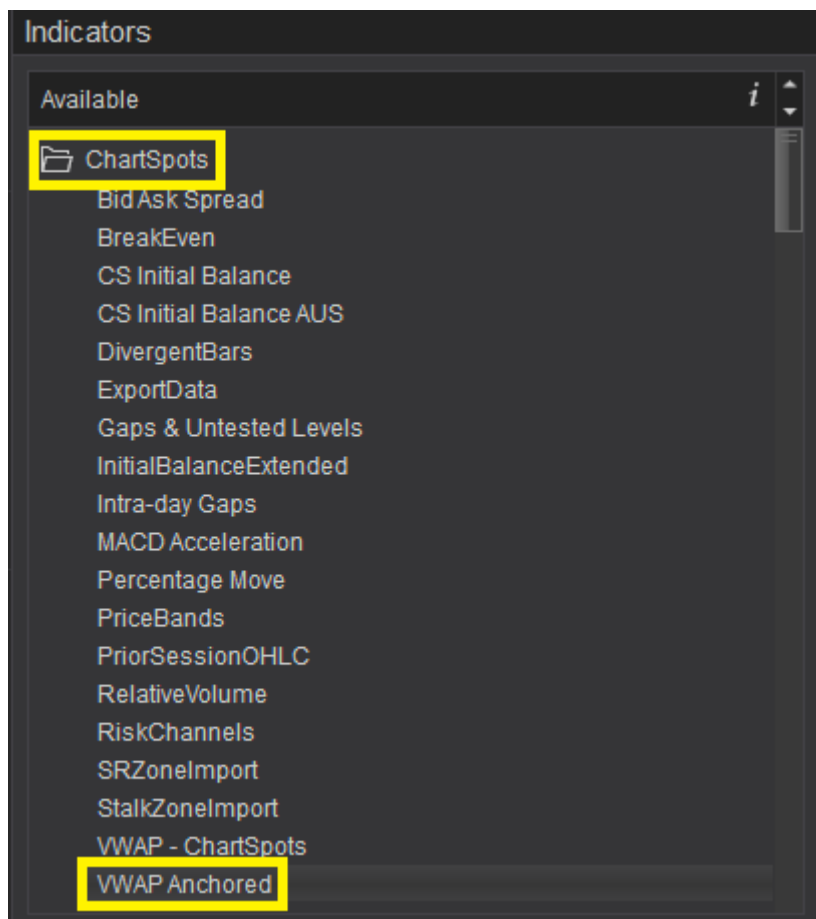
2.1 Add Indicator to Chart

Open an **Intra-day** chart and follow these steps:

1. Click the indicators button



2. Open the ChartSpots folder
3. Double click "VWAP Anchored"



The Indicator will now be added in the "Configured" Pane of the Indicators dialog.

Selecting “VWAP Anchored” in the Configured Pane allows you to further configure the Indicator.

2.2 Configure Anchor Date Time

Configure the Anchor Date Time to specify as from what point in time the VWAP needs to be calculated. The VWAP Anchored indicator will take all data after this point in time into account.

The screenshot shows the 'Properties' window for the 'VWAP Anchored' indicator. The 'Anchor Date Time' is set to '01/01/2022 00:00:00'. A calendar for January 2022 is displayed, with the 1st of January highlighted in red. The 'Visual' section shows 'Line, Solid, 2px'.

January 2022						
Su	Mo	Tu	We	Th	Fr	Sa
26	27	28	29	30	31	1
2	3	4	5	6	7	8
9	10	11	12	13	14	15
16	17	18	19	20	21	22
23	24	25	26	27	28	29
30	31	1	2	3	4	5